



GRAND ORION

Near Mahalaxmi Mandir, Mitramandal

PROUDLY CRAFTED BY



PANDIT[®]
JAVDEKAR



AGASTYA



SAY HELLO TO GRAND ORION

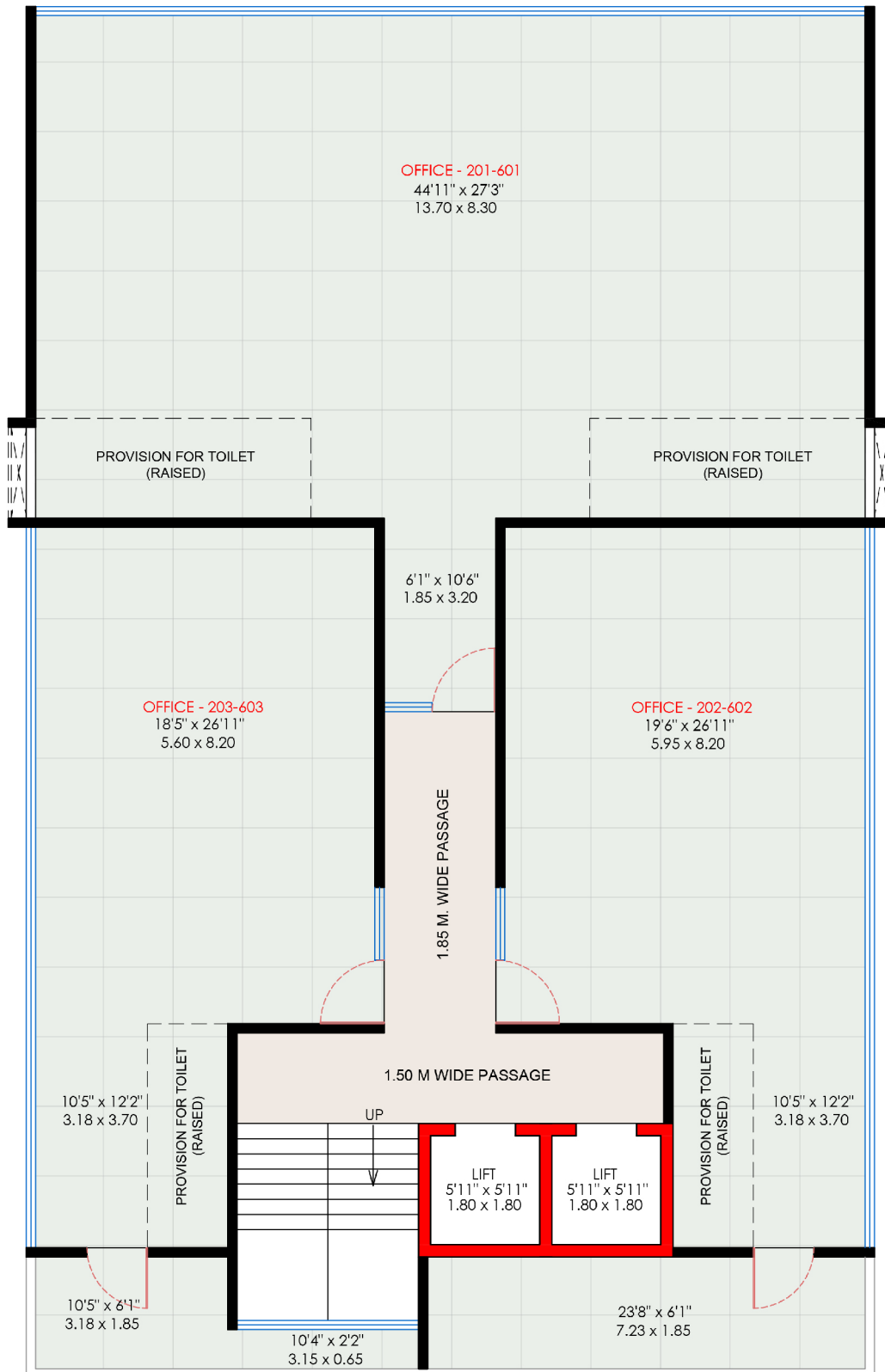
Not Just an Address, a Business Constellation!

Forget cubicles and boardrooms. Think galaxies, connections, and limitless possibilities! At Grand Orion, we're not just giving you an address—we're putting your business in the right orbit. Here, ambition isn't confined to four walls; it expands like the universe itself, reaching new heights with every deal, every handshake, and every breakthrough.

This isn't just a commercial space—it's a launchpad for visionaries, a gravitational hub for industry leaders, and a business constellation in the making. Whether you're a rising star or a market meteor, Grand Orion gives you the perfect coordinates to scale, network, and thrive. Because success isn't just about location—it's about positioning yourself in the right galaxy!



A Business
Supernova
in the Making!

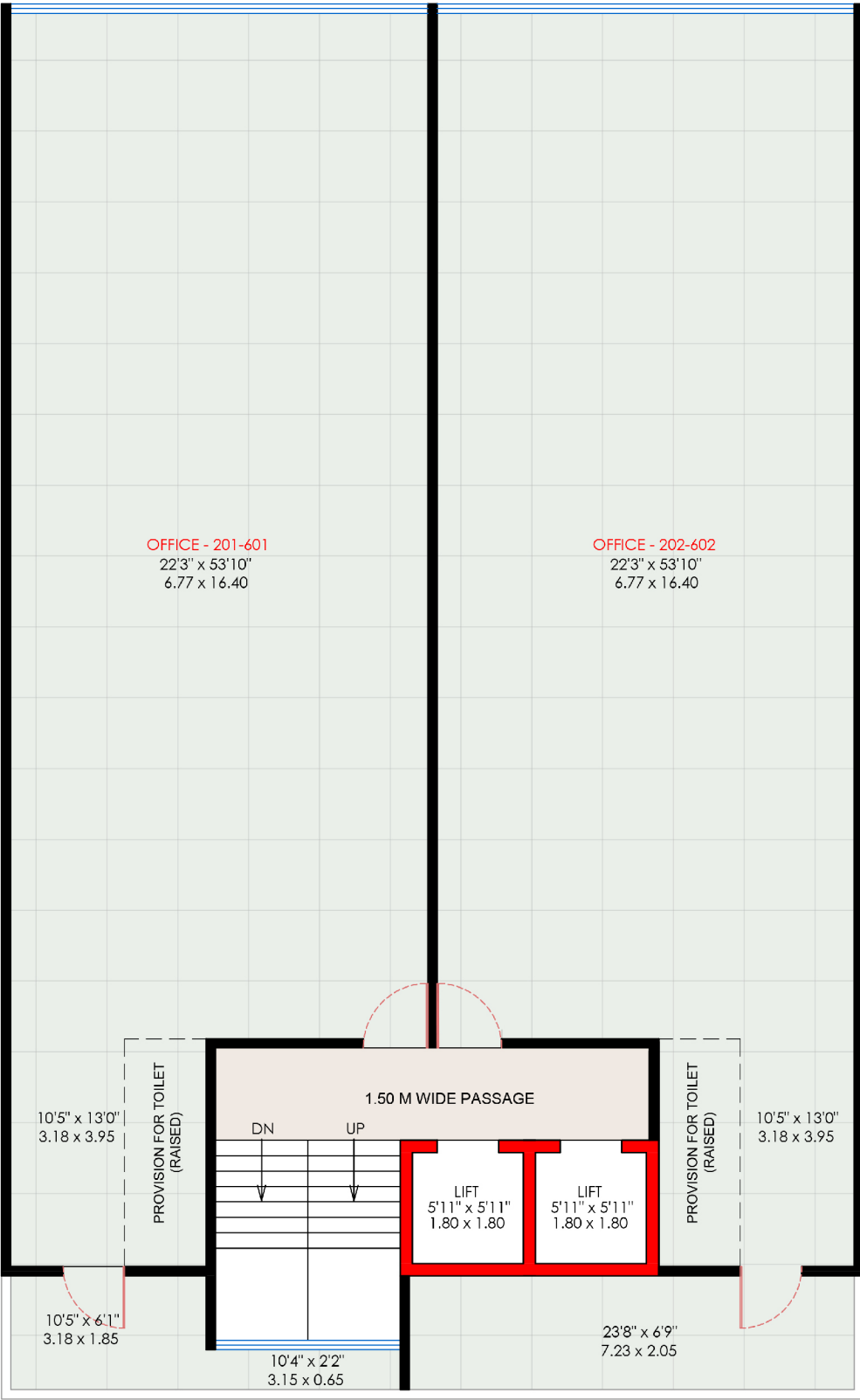


OPTION : 1





OPTION 2

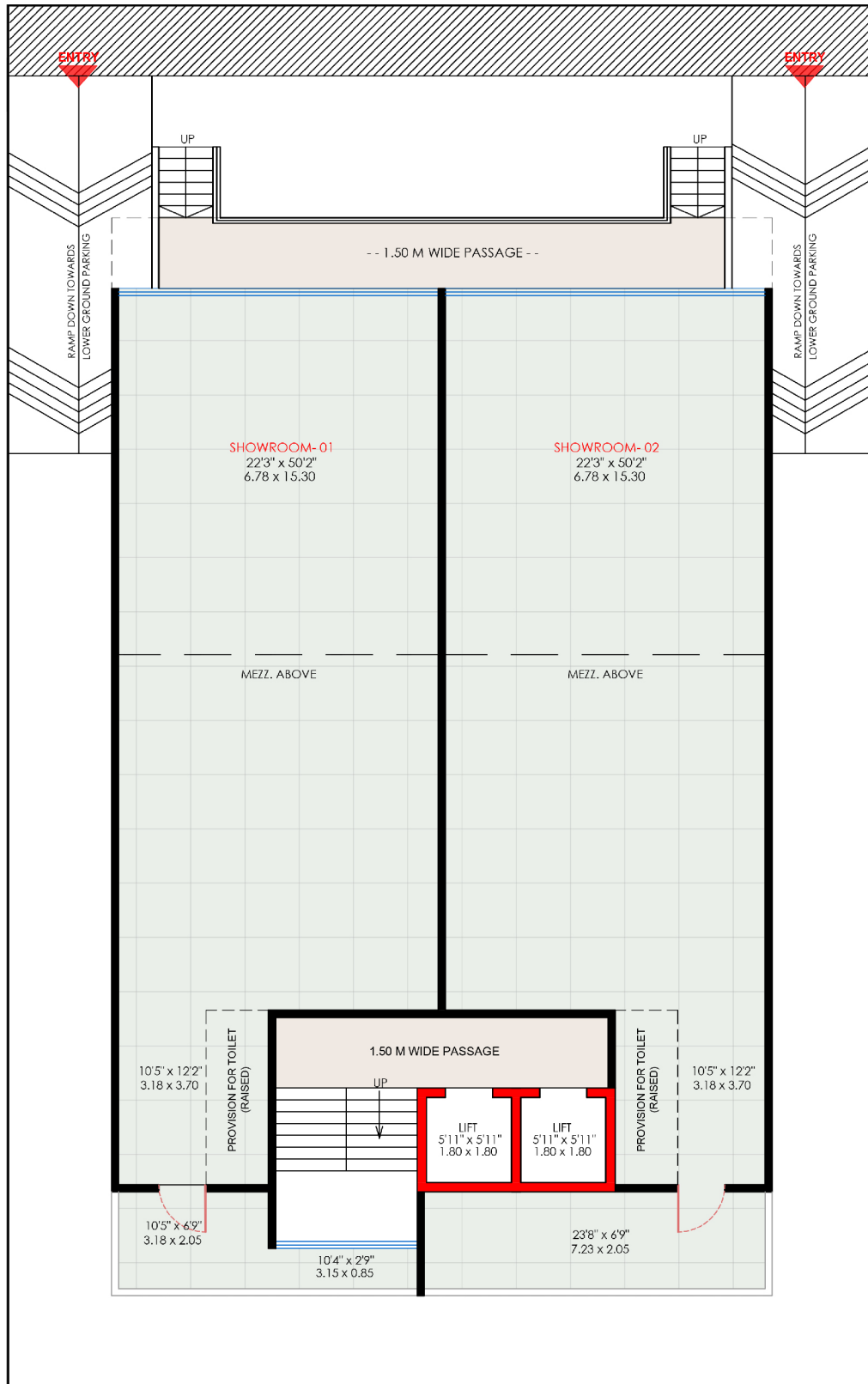


OPTION : 2





--- 18 M WIDE ROAD ---





A Perfect Synergy of Craftsmanship

Pandit Javdekar Group and Agastya Group have come together to create something truly special—an inspiring blend of tradition and innovation, where craftsmanship meets ambition.

This collaboration is all about pushing boundaries. The heritage and trusted expertise of Pandit Javdekar Group melds effortlessly with the bold vision and creativity of Agastya Group. Together, they craft spaces where every detail matters, ensuring that form meets function with style and precision.

It's more than just a partnership—it's a fusion of strengths, creating environments that transcend the ordinary. When these two forces combine, they redefine excellence, building more than structures—they build dreams, experiences, and legacies that last.

Welcome to a world where innovation and tradition shake hands, brought to life by two masters of their craft.



SPECIFICATIONS

Walls

- Standard R.C.C. construction in compliance with the latest National Building Code and addressing the requirements of the Seismic Zone II (Moderate Seismic Zone) as applicable to Pune.
- POP/Gypsum finishes for internal walls and ceiling. Masonry will be done in AAC blocks.

Painting

- Internal Walls: Plastic Emulsion.
- External Walls: Acrylic Paint (Brand: Asian Paints/Nerolac).

Doors

- 40 mm thick Veneer-finished doors for entrance with safety/rolling shutter.
- Granite door frames along with laminated 32 mm thick flush door shutters fitted with Mortise locks for toilets.

Windows

- Aluminium windows / fixed glass panels / structural glazing.

Pantry

- Granite platform with SS sink.
- Provision for RO / Water Purifier.

Tiling

- 800 x 800 mm vitrified tiles for internal flooring.

Electrification

- Electrical load as a one-point supply up to the DB.

Toilets

- Anti-skid flooring and 600 x 600 mm dado tiles up to ceiling height in toilets (Brand: Kajaria/Simpolo/Asian).
- Chromium-plated fittings in all toilets (Brand: Jaquar or equivalent).
- Wall-hung commodes, urinals, and wash hand basins (Brand: Hindware/Cera or equivalent).

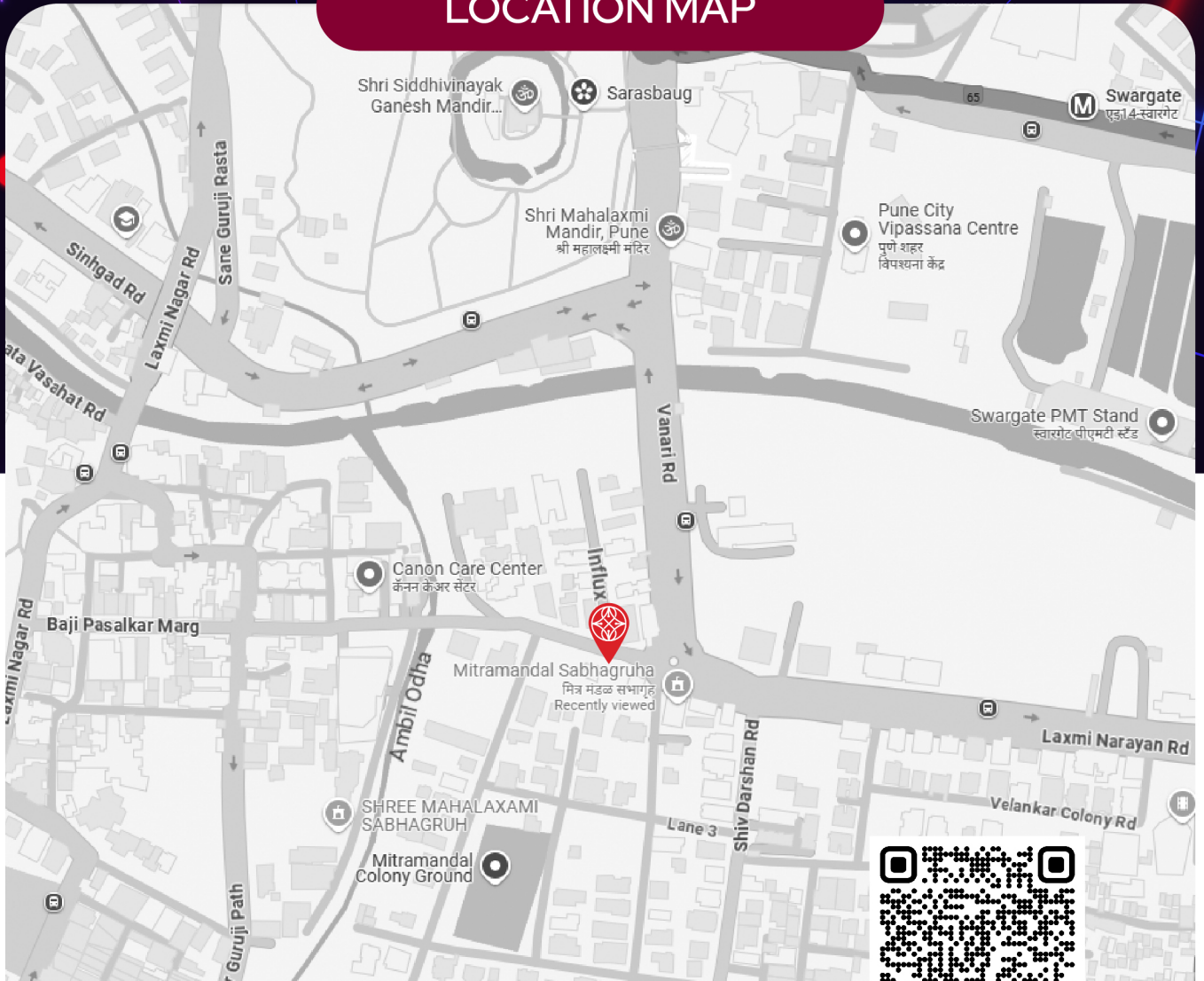
COMMON AMENITIES

- Secured entrance lobby with ramp access.
- 2-8 passenger lifts with auto door (Brand: Kone or equivalent).
- Readymade tread/riser with granite finish landing.
- Decorative railing in staircase.
- Genset backup for lifts, common lighting, and water pump (Make: Kirloskar/Kohler/Cooper).



GRAND ORION

LOCATION MAP



Near Mahalaxmi Mandir, Mitramandal



QR CODE FOR GOOGLE LOCATION

[CLICK HERE FOR THE GOOGLE MAP](#)